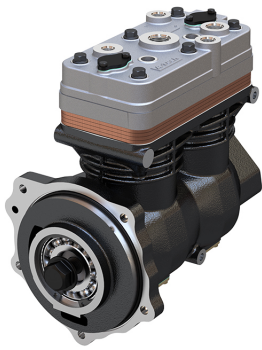


176.01.1000

Compressor (Twin Cylinder)

Application: DETROIT DIESEL ENGINES DDC S60 (EGR)



176.01.1000



176.01.2000
(WITH GEAR)

OEM	OE
BA-922	23531136
5013262	23533382
5012893	
5012894	
801535	
5012895	

Cylinder Bore	Ø92
Stroke	54
Swept Volume	716
Air Inlet Port Size	M27*2
Air Delivery Port Size	M22*1,5
Number of Cylinders	2
Through Drive	YES
Unloader Port Size	1/8 27 NPT
Water Or Air Cooled	W
Water Inlet Port Size	M18*1,5
Water Delivery Port Size	M18*1,5
Water Cooled Valve Plate	YES

Components

176.01.1100 Crankcase



OEM	OE

176.01.1200 Cylinder Head



OEM	OE

176.01.1220 Cylinder Upper Head



OEM	OE

176.01.1230 Cylinder Lower Head



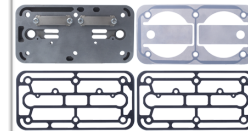
OEM	OE

176.01.1210 Cylinder Head With Plate Kit



OEM	OE

176.01.1300 Plate Kit



OEM	OE

670.01.1400 Connecting Rod



OEM	OE

176.01.1500 Crankshaft



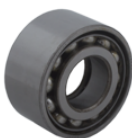
OEM	OE

672.06.100 Safety Valve



OEM	OE
800534	800534

672.01.1103 Bearing



OEM	OE
	40BVV09-1

122.01.1700 Piston With Rings (STD)



OEM	OE
SEB22530	21136690
K006026	7421136690
K012079	51541196008
	51541196009

122.01.1700-Ø92.00 mm
122.01.1710-Ø92.25 mm
122.01.1720-Ø92.50 mm
122.01.1730-Ø92.75 mm
122.01.1740-Ø93.00 mm

122.01.1800 Piston Ring Kit (STD)



OEM	OE

122.01.1800-Ø92.00 mm
122.01.1810-Ø92.25 mm
122.01.1820-Ø92.50 mm
122.01.1830-Ø92.75 mm
122.01.1840-Ø93.00 mm

176.01.2300 Repair Kit With Bushing		OEM	OE

176.01.2350 Repair Kit w/o Bushing		OEM	OE

176.01.2330 Repair Kit		OEM	OE

176.01.2320 Repair Kit		OEM	OE

176.01.1280 Head Repair Kit		OEM	OE

176.01.2100 Gasket & Sealing Kit		OEM	OE

176.01.2200 Valve Kit		OEM	OE

175.01.2500 Unloader Valve Kit		OEM	OE
		K034874K50 K159064K50 K049446	1919356 0021304915

175.01.1900 Bottom Cover Kit		OEM	OE

670.01.2600 Bushing		OEM	OE
		5010767	5010767

672.01.2900 Gear		OEM	OE

672.01.2910 Flange For Gear		OEM	OE

672.01.2950 GearSet		OEM	OE

110.01.2700 Screw Kit		OEM	OE

		OEM	OE

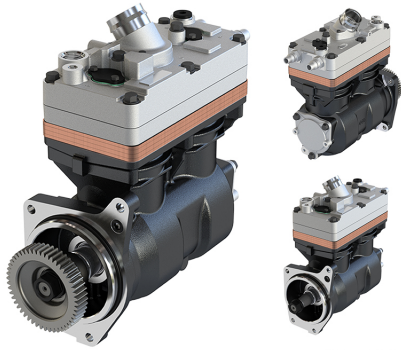
		OEM	OE

		OEM	OE

		OEM	OE

440.01.1000 Compressor (Twin Cylinder)

Application: OM470 LA EURO6



440.01.1000

440.01.2000 (WITHOUT GEAR)

OEM	OE
LK4968	0011305015
LK4945	0011304315
K014416	4721301215
K014416N01	0011305015
K052051N01	0011304315
K026846N01	4721301215

Cylinder Bore	Ø86
Stroke	56 mm
Swept Volume	650 cc
Air Inlet Port Size	Ø34.5
Air Delivery Port Size	M26x1.5
Number of Cylinders	2
Through Drive	Yes
Unloader Port Size	M10x1
Water Or Air Cooled	W
Water Inlet Port Size	M18x1.5
Water Delivery Port Size	M18x1.5
Water Cooled Valve Plate	Yes

Components

440.01.1100 Crankcase

OEM	OE

440.01.4200 Cylinder Head

OEM	OE

440.01.4220 Cylinder Upper Head

OEM	OE

440.01.1230 Cylinder Lower Head

OEM	OE

440.01.4210 Cylinder Head With Plate Kit

OEM	OE

440.01.4250 Cylinder Head Repair Kit

OEM	OE

440.01.1300 Plate Kit

OEM	OE

440.01.1400 Connecting Rod

OEM	OE

440.01.1500 Crankshaft

OEM	OE

172.01.1600 Bearing Cover

OEM	OE

408.01.1700 Piston With Rings (STD)

OEM	OE
	SEB22547
	42549147
	42562096
	42534241
	42536601
408.01.1700-Ø86.00 mm	
408.01.1710-Ø86.25 mm	
408.01.1720-Ø86.50 mm	
408.01.1730-Ø86.75 mm	
408.01.1740-Ø87.00 mm	

408.01.1800 Piston Ring Kit (STD)

OEM	OE
408.01.1800-Ø86.00 mm	
408.01.1810-Ø86.25 mm	
408.01.1820-Ø86.50 mm	
408.01.1830-Ø86.75 mm	
408.01.1840-Ø87.00 mm	

440.01.2300 Repair Kit With Bushing

OEM	OE

440.01.2350 Repair Kit w/o Bushing

OEM	OE

440.01.2330 Repair Kit

OEM	OE

440.01.1280 Head Repair Kit

OEM	OE

440.01.2100 Gasket & Sealing Kit

OEM	OE

440.01.2200 Valve Kit

OEM	OE

175.01.2500 Unloader Valve Kit

OEM	OE
K034874K50 K159064K50 K049446	1919356 0021304915

440.01.2900 Gear

OEM	OE

102.01.2600 Bushing

OEM	OE
EB00819	1315274 1697278 1697286 5001830853 1697286

110.01.2700 Screw Kit

OEM	OE

172.01.1900 Cap

OEM	OE

OEM	OE

OEM	OE

OEM	OE

OEM	OE

OEM	OE

OEM	OE

OEM	OE

512.01.1000

Compressor (Single Cylinder)

Application: AROCS EURO6 / OM934 / OM936 / ACTROS 2632



512.01.1000

512.01.2000
(WITHOUT GEAR)

OEM	OE
9122100000	0011309715 9361301215 0021304415 0021307215 0011307615 0011309715 9361301215 0021304415 0021307215 0011307615

Cylinder Bore	Ø100
Stroke	50 mm
Swept Volume	393 cc
Air Inlet Port Size	Ø34.5
Air Delivery Port Size	M26x1,5
Number of Cylinders	1
Through Drive	yes
Unloader Port Size	-
Water Or Air Cooled	W
Water Inlet Port Size	M18x1.5
Water Delivery Port Size	M18x1.5
Water Cooled Valve Plate	Yes

Components

512.01.1100 Crankcase

	OEM	OE

512.01.1200 Cylinder Head

	OEM	OE
	9122109232	0021305015 0021305115

512.01.1220 Cylinder Upper Head

	OEM	OE

512.01.1230 Cylinder Lower Head

	OEM	OE

512.01.1300 Coolant Plate

	OEM	OE
	9122102504	

513.01.1400 Connecting Rod

	OEM	OE

512.01.1500 Crankshaft

	OEM	OE

512.01.1510 Pump Adapter

	OEM	OE
	9122106404	

143.01.3600 Adapter

	OEM	OE
	9120003404	

143.01.2600 Bushing

	OEM	OE

513.01.1700 Piston With Rings (STD)

	OEM	OE
513.01.1700-Ø100.00 mm 513.01.1710-Ø100.25 mm 513.01.1720-Ø100.50 mm 513.01.1730-Ø100.75 mm 513.01.1740-Ø101.00 mm		

513.01.1800 Piston Ring Kit (STD)

	OEM	OE
513.01.1800-Ø100.00 mm 513.01.1810-Ø100.25 mm 513.01.1820-Ø100.50 mm 513.01.1830-Ø100.75 mm 513.01.1840-Ø101.00 mm		

512.01.2300 Repair Kit With Bushing

	OEM	OE

512.01.2310 Repair Kit With Plate

	OEM	OE

512.01.2350 Repair Kit w/o Bushing

	OEM	OE

512.01.2330 Repair Kit

	OEM	OE

512.01.2320 Repair Kit

	OEM	OE
9122109242		

512.01.2100 Gasket & Sealing Kit

	OEM	OE

512.01.2200 Valve Kit

	OEM	OE

512.01.1280 Head Repair Kit

	OEM	OE

512.01.2500 Unloader Valve Kit

	OEM	OE

487.01.2900 Gear

	OEM	OE
9361320305		

	OEM	OE

	OEM	OE

	OEM	OE

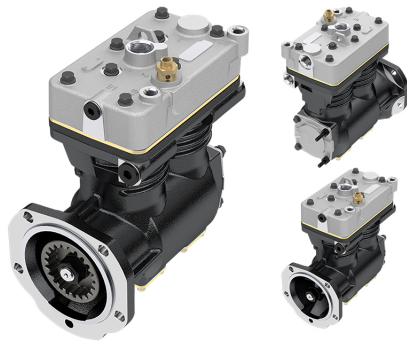
	OEM	OE

	OEM	OE

	OEM	OE

	OEM	OE

	OEM	OE

636.01.1000
Compressor (Twin Cylinder)
Application: DETROIT DIESEL 60 SERIES

636.01.1000
**636.01.2000
(WITHOUT GEAR)**

OEM	OE	Cylinder Bore	Ø88
DURA-FLO596	23514143	Stroke	50
LP4977	23524143	Swept Volume	608
II37369		Air Inlet Port Size	M27x2
5011086		Air Delivery Port Size	M27x2
5008303		Number of Cylinders	2
5005920		Through Drive	YES
5005875		Unloader Port Size	M22x1.5
5004417		Water Or Air Cooled	W
5004416		Water Inlet Port Size	M16x1.5
800595		Water Delivery Port Size	M16x1.5
		Water Cooled Valve Plate	YES

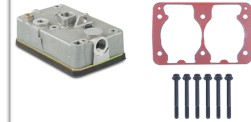
Components

636.01.1100 Crankcase


OEM	OE

636.01.1200 Cylinder Head


OEM	OE

636.01.1210 Cylinder Head With Plate Kit


OEM	OE

636.01.1500 Crankshaft

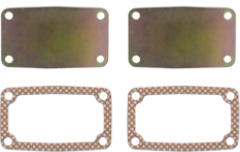

OEM	OE

636.01.1580 Nut For Crankshaft


OEM	OE

110.01.1400 Connecting Rod


OEM	OE
SEB00967004	3097151

102.01.1900 Bottom Cover Kit


OEM	OE
EB01058	1283816 1697772

102.01.2600 Bushing


OEM	OE
EB00819	1315274 1409318 1697278 1697286 5001830853 1697286

672.06.100 Safety Valve


OEM	OE
800534	800534

110.01.1600 Bearing Cover


OEM	OE
II159920065	1376275 3097150

110.01.1700 Piston With Rings (STD)


110.01.1700-Ø88.00 mm
110.01.1710-Ø88.25 mm
110.01.1720-Ø88.50 mm
110.01.1730-Ø88.75 mm
110.01.1740-Ø89.00 mm

OEM	OE
SEB22555	1361265
I81169004	1409318 1698848 3095841 51541036001 81541190007 85101375

110.01.1800 Piston Ring Kit (STD)


110.01.1800-Ø88.00 mm
110.01.1810-Ø88.25 mm
110.01.1820-Ø88.50 mm
110.01.1830-Ø88.75 mm
110.01.1840-Ø89.00 mm

OEM	OE
I811690062	3097153
II39526F0061	85100626

110.01.2300 Repair Kit With Bushing		OEM	OE

110.01.2350 Repair Kit w/o Bushing		OEM	OE
		SEB22560 SEB22596	

110.01.2330 Repair Kit		OEM	OE

110.01.2320 Repair Kit		OEM	OE

110.01.1310 Plate Kit, Complete		OEM	OE

110.01.1300 Plate Kit		OEM	OE
		SEB01033004	1376272 3097146

110.01.1280 Head Repair Kit		OEM	OE

110.01.2100 Gasket & Sealing Kit		OEM	OE
		SEB22561	1376281 1542159 3097143

102.01.2500 Unloader Valve Kit		OEM	OE
		II159920063	1376279 3097147

110.01.2200 Valve Kit		OEM	OE
		SEB01138004 II326840061	1376280 1391386 3091718 3091739

110.01.2700 Screw Kit		OEM	OE

110.01.2400 Valve Kit		OEM	OE

636.01.2900 Gear		OEM	OE
			8929721 8929721

		OEM	OE

		OEM	OE

		OEM	OE

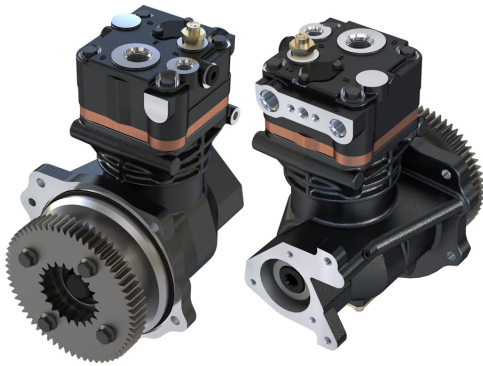
		OEM	OE

		OEM	OE

672.01.1000

Compressor (Single Cylinder)

Application: DETROIT DIESEL ENGINE DDC S60 (Pre-2007)



OEM	OE
BA-921	23535534
5018485	23532823
5018523	
5018522	
5018516	
5018514	
5016799	
5016614	
5016613	
5016612	
5014382	
5012794	
5010824	
5010823	
5010822	
802767	
801287	

Cylinder Bore	Ø92
Stroke	54
Swept Volume	358
Air Inlet Port Size	M27*2
Air Delivery Port Size	M22*1,5
Number of Cylinders	1
Through Drive	YES
Unloader Port Size	1/8 27 NPT
Water Or Air Cooled	W
Water Inlet Port Size	M18*1,5
Water Delivery Port Size	M18*1,5
Water Cooled Valve Plate	YES

Components

672.01.1100 Crankcase



OEM	OE
	5010119

672.01.1200 Cylinder Head



OEM	OE

672.01.1220 Cylinder Upper Head



OEM	OE

672.01.1230 Cylinder Lower Head



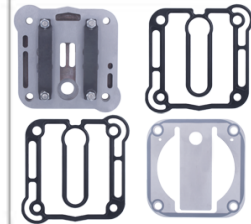
OEM	OE

672.01.1210 Cylinder Head With Plate Kit



OEM	OE

670.01.1300 Plate Kit



OEM	OE

670.01.1400 Connecting Rod



OEM	OE

672.01.1500 Crankshaft



OEM	OE

670.01.1502 Screw for Crankshaft



OEM	OE

672.01.1510 Pump Adapter



OEM	OE

120.01.1900 Bottom Cover Kit



OEM	OE

672.01.2600 Bushing



OEM	OE
	AK2500350R

122.01.1700 Piston With Rings (STD)


OEM	OE
SEB22530 K006026 K012079	21136690 7421136690 51541196008 51541196009

122.01.1700-Ø92.00 mm
122.01.1710-Ø92.25 mm
122.01.1720-Ø92.50 mm
122.01.1730-Ø92.75 mm
122.01.1740-Ø93.00 mm

122.01.1800 Piston Ring Kit (STD)


122.01.1800-Ø92.00 mm
122.01.1810-Ø92.25 mm
122.01.1820-Ø92.50 mm
122.01.1830-Ø92.75 mm
122.01.1840-Ø93.00 mm

672.01.2300 Repair Kit With Bushing


OEM	OE

670.01.2350 Repair Kit w/o Bushing

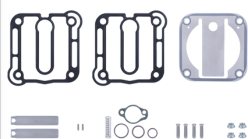

OEM	OE

670.01.2330 Repair Kit

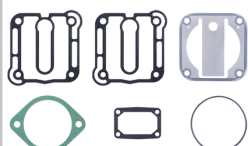

OEM	OE

670.01.2320 Repair Kit


OEM	OE

670.01.1280 Head Repair Kit


OEM	OE

670.01.2100 Gasket & Sealing Kit


OEM	OE

265.01.2200 Valve Kit


OEM	OE

670.01.2500 Unloader Valve Kit


OEM	OE
K034874K50	

672.01.2900 Gear

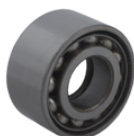

OEM	OE

672.01.2910 Flange For Gear


OEM	OE

672.01.2950 GearSet


OEM	OE

672.01.1103 Bearing


OEM	OE
	40BVV09-1

672.06.100 Safety Valve


OEM	OE
800534	800534

130.01.2700 Screw Kit

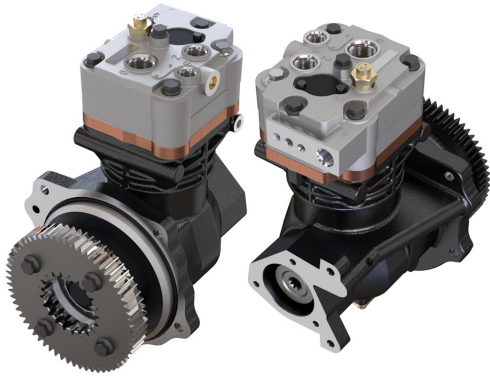

OEM	OE

Screw Kit

OEM	OE

Screw Kit

OEM	OE

673.01.1000
Compressor (Single Cylinder)
Application: DETROIT DIESEL ENGINE S60


OEM	OE
BA-921CLOSEDROOM	23536774
5018652	
5018653	
5018654	
5018655	
5018769	
802789	

Cylinder Bore	Ø92
Stroke	54
Swept Volume	358
Air Inlet Port Size	M27*2
Air Delivery Port Size	M22*1,5/M16*1,5
Number of Cylinders	1
Through Drive	YES
Unloader Port Size	1/8 27 NPT
Water Or Air Cooled	W
Water Inlet Port Size	M18*1,5
Water Delivery Port Size	M18*1,5
Water Cooled Valve Plate	YES

Components

673.01.1100 Crankcase


OEM	OE

673.01.1200 Cylinder Head


OEM	OE

673.01.1220 Cylinder Upper Head


OEM	OE

441.01.1230 Cylinder Lower Head


OEM	OE

673.01.1210 Cylinder Head With Plate Kit


OEM	OE

441.01.1300 Plate Kit


OEM	OE
K011811	

670.01.1400 Connecting Rod


OEM	OE

672.01.1500 Crankshaft


OEM	OE

670.01.1502 Screw for Crankshaft


OEM	OE

120.01.1900 Bottom Cover Kit


OEM	OE

122.01.1700 Piston With Rings (STD)


OEM	OE
SEB22530	21136690
K006026	7421136690
K012079	51541196008
	51541196009

122.01.1700-Ø92.00 mm
 122.01.1710-Ø92.25 mm
 122.01.1720-Ø92.50 mm
 122.01.1730-Ø92.75 mm
 122.01.1740-Ø93.00 mm

122.01.1800 Piston Ring Kit (STD)


OEM	OE

122.01.1800-Ø92.00 mm
 122.01.1810-Ø92.25 mm
 122.01.1820-Ø92.50 mm
 122.01.1830-Ø92.75 mm
 122.01.1840-Ø93.00 mm

673.01.2300 Repair Kit With Bushing

OEM	OE

673.01.2350 Repair Kit w/o Bushing

OEM	OE

673.01.2320 Repair Kit

OEM	OE

673.01.2330 Repair Kit

OEM	OE

441.01.2200 Valve Kit

OEM	OE

673.01.2100 Gasket & Sealing Kit

OEM	OE

441.01.1280 Head Repair Kit

OEM	OE

670.01.2500 Unloader Valve Kit

OEM	OE
	K034874K50

672.01.2600 Bushing

OEM	OE
	AK2500350R

672.01.2900 Gear

OEM	OE

672.01.2910 Flange For Gear

OEM	OE

672.01.1103 Bearing

OEM	OE
	40BVV09-1

441.01.2700 Screw Kit

OEM	OE

OEM	OE

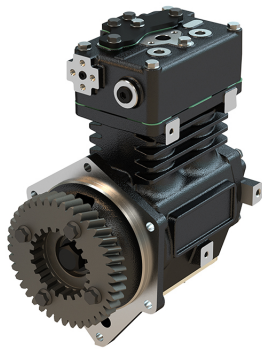
OEM	OE

OEM	OE

OEM	OE

OEM	OE

697.01.1000 Compressor (Twin Cylinder)



697.01.1000



697.01.2000 (WITHOUT GEAR)

OEM	OE
Tu-Flo750	23522123
5004187	8216809
5001616	2835014358024
5001617	G1018889
5004083	6336882R
5005934	23516841
5008610	
65538	
109426	
109430	
800394	

Cylinder Bore	Ø70,64
Stroke	48
Swept Volume	376
Air Inlet Port Size	-
Air Delivery Port Size	1/2"-14 NPTF
Number of Cylinders	2
Through Drive	Yes
Unloader Port Size	1/8"- 27 NPTF
Water Or Air Cooled	W
Water Inlet Port Size	1/2"-14 NPTF
Water Delivery Port Size	1/2"-14 NPTF
Water Cooled Valve Plate	Yes

Components

697.01.1100 Crankcase

OEM	OE

712.01.1200 Cylinder Head

OEM	OE
107082	9P920283

712.01.1400 Connecting Rod

OEM	OE
108841	

712.01.1410 Big end Bearing

OEM	OE
107651	

697.01.1470 Connecting Rod & Piston Rep Kit

OEM	OE

697.01.1500 Crankshaft

OEM	OE

670.01.1502 Screw for Crankshaft

OEM	OE

697.01.1600 Bearing Cover

OEM	OE

697.01.1700 Piston With Rings (STD)

OEM	OE

697.01.1700-Ø70.64 mm
697.01.1710-Ø70.89 mm
697.01.1720-Ø71.14 mm
697.01.1730-Ø71.39 mm
697.01.1740-Ø71.64 mm

697.01.1701 Piston Ring Kit (STD)

OEM	OE

697.01.1701-Ø70.64 mm
697.01.1711-Ø70.89 mm
697.01.1721-Ø71.14 mm
697.01.1731-Ø71.39 mm
697.01.1741-Ø71.64 mm

712.01.1800 Piston Ring Kit (STD)

OEM	OE
5005361 107639	

712.01.1800-Ø70.64 mm
712.01.1810-Ø70.89 mm
712.01.1820-Ø71.14 mm
712.01.1830-Ø71.39 mm
712.01.1840-Ø71.64 mm

697.01.2900 Gear

OEM	OE
	8929311

672.01.2910 Flange For Gear

	OEM	OE

672.01.1103 Bearing

	OEM	OE
		40BVV09-1

712.01.2350 Repair Kit w/o Bushing

	OEM	OE
	107516	107516 2K200296

697.01.2950 GearSet

	OEM	OE

	OEM	OE

	OEM	OE

	OEM	OE

	OEM	OE

	OEM	OE

	OEM	OE

	OEM	OE

	OEM	OE

	OEM	OE

	OEM	OE

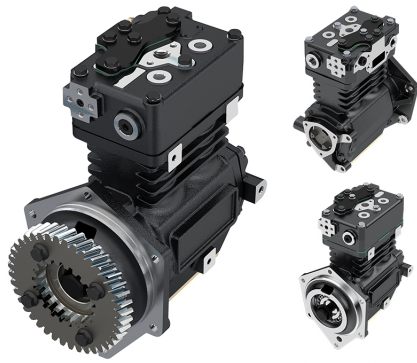
	OEM	OE

	OEM	OE

	OEM	OE

	OEM	OE

727.01.1000 Compressor (Twin Cylinder)



727.01.1000

**727.01.2000
(WITHOUT GEAR)**

OEM	OE
Tu-Flo550	23516840
5004188	85106354
5001614	745X5004188
5001615	23522122
5004082	
5005933	
5008609	
65537	
109425	
109429	
800395	

Cylinder Bore	Ø70,64
Stroke	38
Swept Volume	298
Air Inlet Port Size	-
Air Delivery Port Size	1/2'-14 NPTF
Number of Cylinders	2
Through Drive	Yes
Unloader Port Size	1/8'- 27 NPTF
Water Or Air Cooled	W
Water Inlet Port Size	1/2'-14 NPTF
Water Delivery Port Size	1/2'-14 NPTF
Water Cooled Valve Plate	Yes

Components

697.01.1100 Crankcase

OEM	OE

712.01.1200 Cylinder Head

OEM	OE
107082	9P920283

712.01.1400 Connecting Rod

OEM	OE
108841	

712.01.1410 Big end Bearing

OEM	OE
107651	

712.01.1470 Connecting Rod & Piston Rep

OEM	OE
108843	

712.01.1500 Crankshaft

OEM	OE

670.01.1502 Screw for Crankshaft

OEM	OE

697.01.1600 Bearing Cover

OEM	OE

712.01.1700 Piston With Rings (STD)

OEM	OE

712.01.1700-Ø70.64 mm
712.01.1710-Ø70.89 mm
712.01.1720-Ø71.14 mm
712.01.1730-Ø71.39 mm
712.01.1740-Ø71.64 mm

712.01.1800 Piston Ring Kit (STD)

OEM	OE
5005361 107639	

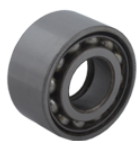
712.01.1800-Ø70.64 mm
712.01.1810-Ø70.89 mm
712.01.1820-Ø71.14 mm
712.01.1830-Ø71.39 mm
712.01.1840-Ø71.64 mm

697.01.2900 Gear

OEM	OE
	8929311

672.01.2910 Flange For Gear

OEM	OE

672.01.1103 Bearing


OEM

OE

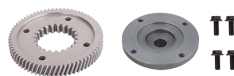
40BVV09-1

712.01.2350 Repair Kit w/o Bushing


OEM

OE

107516

107516
2K200296
697.01.2950 GearSet


OEM

OE

OEM

OE

OEM

OE

OEM

OE

OEM

OE

OEM

OE

OEM

OE

OEM

OE

OEM

OE

OEM

OE

OEM

OE

OEM

OE

OEM

OE

OEM

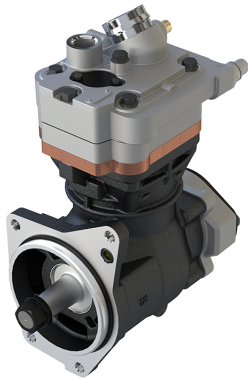
OE

OEM

OE

OEM

OE

728.01.1000
Compressor (Single Cylinder)
Application: DETROIT DIESEL DD13/DD15 / FREIGHTLINER

728.01.1000

**728.01.2000
(WITH GEAR)**

OEM	OE
BA-921	4721300615
K020801	4721301175
K031986	4721301115
K031986SC	4721300615
K031987	4721301175
K095740	4721301115
K095124	4721300815
K020253	

Cylinder Bore	Ø92
Stroke	54
Swept Volume	360
Air Inlet Port Size	Ø45
Air Delivery Port Size	M26x1.5
Number of Cylinders	1
Through Drive	Yes
Unloader Port Size	M10x1
Water Or Air Cooled	W
Water Inlet Port Size	M18x1.5
Water Delivery Port Size	M18x1.5
Water Cooled Valve Plate	Yes

Components

728.01.1100 Crankcase

	OEM	OE

728.01.1200 Cylinder Head

	OEM	OE

728.01.1220 Cylinder Upper Head

	OEM	OE

441.01.1230 Cylinder Lower Head

	OEM	OE

728.01.1210 Cylinder Head With Plate Kit

	OEM	OE

441.01.1300 Plate Kit

	OEM	OE
	K011811	

409.01.1400 Connecting Rod

	OEM	OE
	SEB22464	85104324

265.01.1470 Connecting Rod & Piston Rep

	OEM	OE

409.01.1580 Nut For Crankshaft

	OEM	OE
	8103410034	0029906650

441.01.1510 Adapter

	OEM	OE

122.01.1700 Piston With Rings (STD)

	OEM	OE
	SEB22530 K006026 K012079	21136690 7421136690 51541196008 51541196009
122.01.1700-Ø92.00 mm		
122.01.1710-Ø92.25 mm		
122.01.1720-Ø92.50 mm		
122.01.1730-Ø92.75 mm		
122.01.1740-Ø93.00 mm		

122.01.1800 Piston Ring Kit (STD)


	OEM	OE
122.01.1800-Ø92.00 mm		
122.01.1810-Ø92.25 mm		
122.01.1820-Ø92.50 mm		
122.01.1830-Ø92.75 mm		
122.01.1840-Ø93.00 mm		

172.01.1900 Cap		
	OEM	OE
		

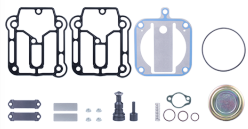
441.01.2600 Bushing		
	OEM	OE
		

441.01.2700 Screw Kit		
	OEM	OE
		

440.01.2900 Gear		
	OEM	OE
		


441.01.2300 Repair Kit With Bushing		
	OEM	OE
		

441.01.2350 Repair Kit w/o Bushing		
	OEM	OE
		

441.01.2330 Repair Kit		
	OEM	OE
		

441.01.2320 Repair Kit		
	OEM	OE
 K011815		

441.01.1280 Head Repair Kit		
	OEM	OE
		

441.01.2100 Gasket & Sealing Kit		
	OEM	OE
		

441.01.2200 Valve Kit		
	OEM	OE
		

670.01.2500 Unloader Valve Kit		
	OEM	OE
 K034874K50		

728.01.1500 Crankshaft		
	OEM	OE
		

441.01.1600 Bearing Cover		
	OEM	OE
		

	OEM	OE

	OEM	OE

	OEM	OE

	OEM	OE

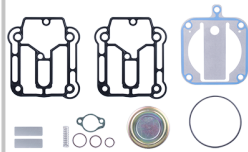
172.01.1900 Cap		
	OEM	OE
		

441.01.2600 Bushing		
	OEM	OE
		

441.01.2700 Screw Kit		
	OEM	OE
		

440.01.2900 Gear		
	OEM	OE
		

441.01.2300 Repair Kit With Bushing		
	OEM	OE
		

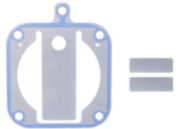
441.01.2350 Repair Kit w/o Bushing		
	OEM	OE
		


441.01.2330 Repair Kit		
	OEM	OE
		

441.01.2320 Repair Kit		
	OEM	OE
 K011815		

441.01.1280 Head Repair Kit		
	OEM	OE
		

441.01.2100 Gasket & Sealing Kit		
	OEM	OE
		

441.01.2200 Valve Kit		
	OEM	OE
		

670.01.2500 Unloader Valve Kit		
	OEM	OE
 K034874K50		

728.01.1500 Crankshaft		
	OEM	OE
		

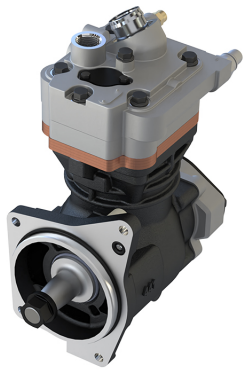
441.01.1600 Bearing Cover		
	OEM	OE
		

	OEM	OE

	OEM	OE

	OEM	OE

	OEM	OE

729.01.1000
Compressor (Single Cylinder)
Application: DETROIT DIESEL DD13/DD15 / FREIGHTLINER


729.01.1000


 729.01.2000
(WITH GEAR)

OEM	OE
BA-921	4711301715
K035912	4711300215
K034111	0011307215
K035911	0011305315
K035911SC	0011304915
K095125	0011304515
K095731	4711302515

Cylinder Bore	Ø92
Stroke	54
Swept Volume	360
Air Inlet Port Size	Ø45
Air Delivery Port Size	M26x1.5
Number of Cylinders	1
Through Drive	Yes
Unloader Port Size	M10x1
Water Or Air Cooled	W
Water Inlet Port Size	M18x1.5
Water Delivery Port Size	M18x1.5
Water Cooled Valve Plate	Yes

Components

441.01.1100 Crankcase

	OEM	OE

729.01.1200 Cylinder Head

	OEM	OE

729.01.1220 Cylinder Upper Head

	OEM	OE

441.01.1230 Cylinder Lower Head

	OEM	OE

729.01.1210 Cylinder Head With Plate Kit

	OEM	OE

441.01.1300 Plate Kit

	OEM	OE
	K011811	

409.01.1400 Connecting Rod

	OEM	OE
	SEB22464	85104324

265.01.1470 Connecting Rod & Piston Rep

	OEM	OE

409.01.1580 Nut For Crankshaft

	OEM	OE
	8103410034	0029906650

441.01.1510 Adapter

	OEM	OE


122.01.1700 Piston With Rings (STD)

	OEM	OE
	SEB22530 K006026 K012079	21136690 7421136690 51541196008 51541196009
122.01.1700-Ø92.00 mm		
122.01.1710-Ø92.25 mm		
122.01.1720-Ø92.50 mm		
122.01.1730-Ø92.75 mm		
122.01.1740-Ø93.00 mm		


122.01.1800 Piston Ring Kit (STD)


	OEM	OE
122.01.1800-Ø92.00 mm		
122.01.1810-Ø92.25 mm		
122.01.1820-Ø92.50 mm		
122.01.1830-Ø92.75 mm		
122.01.1840-Ø93.00 mm		

441.01.2600 Bushing		
	OEM	OE
		

441.01.2700 Screw Kit		
	OEM	OE
		

441.01.2900 Gear		
	OEM	OE
		4721320305


441.01.2300 Repair Kit With Bushing		
	OEM	OE
		


441.01.2350 Repair Kit w/o Bushing		
	OEM	OE
		

441.01.2330 Repair Kit		
	OEM	OE
		

441.01.2320 Repair Kit		
	OEM	OE
 K011815		

441.01.1280 Head Repair Kit		
	OEM	OE
		

441.01.2100 Gasket & Sealing Kit		
	OEM	OE
		

441.01.2200 Valve Kit		
	OEM	OE
		

670.01.2500 Unloader Valve Kit		
	OEM	OE
 K034874K50		

172.01.1900 Cap		
	OEM	OE
		

441.01.1500 Crankshaft		
	OEM	OE
		

441.01.1600 Bearing Cover		
	OEM	OE
		

	OEM	OE

	OEM	OE

	OEM	OE

	OEM	OE

Application: DETROIT DIESEL DD13/DD15 / FREIGHTLINER



OEM	OE
BA-921	4711301715
K035912	4711300215
K034111	0011307215
K035911	0011305315
K035911SC	0011304915
K095125	0011304515
K095731	4711302515
	4711301715
	4711300215
	0011307215
	0011305315
	0011304915
	0011304515
	4711302515

Cylinder Bore	Ø92
Stroke	54
Swept Volume	360
Air Inlet Port Size	Ø45
Air Delivery Port Size	M26x1.5
Number of Cylinders	1
Through Drive	Yes
Unloader Port Size	M10x1
Water Or Air Cooled	W
Water Inlet Port Size	M18x1.5
Water Delivery Port Size	M18x1.5
Water Cooled Valve Plate	Yes

Components

441.01.1100 Crankcase

	OEM	OE

729.01.1200 Cylinder Head

	OEM	OE

729.01.1220 Cylinder Upper Head

	OEM	OE

441.01.1230 Cylinder Lower Head

	OEM	OE

729.01.1210 Cylinder Head With Plate Kit

	OEM	OE

441.01.1300 Plate Kit

	OEM	OE
	K011811	

409.01.1400 Connecting Rod

	OEM	OE
	SEB22464	85104324

265.01.1470 Connecting Rod & Piston Rep

	OEM	OE

409.01.1580 Nut For Crankshaft

	OEM	OE
	8103410034	0029906650

441.01.1510 Adapter

	OEM	OE

122.01.1700 Piston With Rings (STD)

	OEM	OE
	SEB22530 K006026 K012079	21136690 7421136690 51541196008 51541196009
122.01.1700-Ø92.00 mm		
122.01.1710-Ø92.25 mm		
122.01.1720-Ø92.50 mm		
122.01.1730-Ø92.75 mm		
122.01.1740-Ø93.00 mm		

122.01.1800 Piston Ring Kit (STD)

	OEM	OE
122.01.1800-Ø92.00 mm		
122.01.1810-Ø92.25 mm		
122.01.1820-Ø92.50 mm		
122.01.1830-Ø92.75 mm		
122.01.1840-Ø93.00 mm		

441.01.2600 Bushing		OEM	OE

441.01.2700 Screw Kit		OEM	OE

441.01.2900 Gear		OEM	OE
			4721320305

441.01.2300 Repair Kit With Bushing		OEM	OE

441.01.2350 Repair Kit w/o Bushing		OEM	OE

441.01.2330 Repair Kit		OEM	OE

441.01.2320 Repair Kit		OEM	OE
 K011815			

441.01.1280 Head Repair Kit		OEM	OE

441.01.2100 Gasket & Sealing Kit		OEM	OE

441.01.2200 Valve Kit		OEM	OE

670.01.2500 Unloader Valve Kit		OEM	OE
 K034874K50			

172.01.1900 Cap		OEM	OE

441.01.1500 Crankshaft		OEM	OE

441.01.1600 Bearing Cover		OEM	OE

		OEM	OE

		OEM	OE

		OEM	OE

		OEM	OE

736.01.1000
Compressor (Twin Cylinder)
Application: DETROIT DIESEL 50/60 SERIES


OEM	OE
Tu-Flo750	6316568
5000191	5MB533
5000193	3949432
107051	23505235
107096	
107623	
107784	
109868	
65217	
65671	
800017	

Cylinder Bore	Ø70,61
Stroke	24
Swept Volume	375,92
Air Inlet Port Size	-
Air Delivery Port Size	-
Number of Cylinders	2
Through Drive	Yes
Unloader Port Size	1/8'-27 NPT
Water Or Air Cooled	W
Water Inlet Port Size	1/2'-14 NPT
Water Delivery Port Size	1/2'-14 NPT
Water Cooled Valve Plate	Yes

Components

762.01.1100 Crankcase

	OEM	OE

712.01.1200 Cylinder Head

	OEM	OE
	107082	9P920283

712.01.1400 Connecting Rod

	OEM	OE
	108841	

712.01.1410 Big end Bearing

	OEM	OE
	107651	

712.01.1470 Connecting Rod & Piston Rep

	OEM	OE
	108843	

736.01.1500 Crankcase

	OEM	OE

636.01.1580 Nut For Crankshaft

	OEM	OE

736.01.1600 Bearing Cover

	OEM	OE

697.01.1700 Piston With Rings (STD)

	OEM	OE
697.01.1700-Ø70.64 mm		
697.01.1710-Ø70.89 mm		
697.01.1720-Ø71.14 mm		
697.01.1730-Ø71.39 mm		
697.01.1740-Ø71.64 mm		

697.01.1701 Piston Ring Kit (STD)

	OEM	OE
697.01.1701-Ø70.64 mm		
697.01.1711-Ø70.89 mm		
697.01.1721-Ø71.14 mm		
697.01.1731-Ø71.39 mm		
697.01.1741-Ø71.64 mm		

712.01.1800 Piston Ring Kit (STD)

	OEM	OE
	5005361	107639
712.01.1800-Ø70.64 mm		
712.01.1810-Ø70.89 mm		
712.01.1820-Ø71.14 mm		
712.01.1830-Ø71.39 mm		
712.01.1840-Ø71.64 mm		

672.01.2600 Bushing

	OEM	OE
		AK2500350R

636.01.2900 Gear		OEM	OE
			8929721 8929721

712.01.2350 Repair Kit w/o Bushing		OEM	OE
		107516	107516 2K200296

712.01.2320 Repair Kit		OEM	OE

712.01.2100 Gasket & Sealing Kit		OEM	OE

712.01.2200 Valve Kit		OEM	OE

		OEM	OE

		OEM	OE

		OEM	OE

		OEM	OE

		OEM	OE

		OEM	OE

		OEM	OE

		OEM	OE

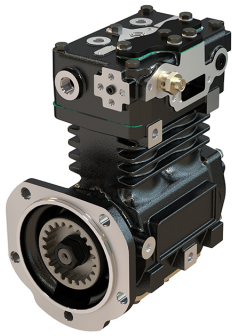
		OEM	OE

		OEM	OE

		OEM	OE

		OEM	OE

		OEM	OE

762.01.1000
Compressor (Twin Cylinder)
Application: DETROIT DIESEL 60 SERIES

762.01.1000

**762.01.2000
(WITHOUT GEAR)**

OEM	OE
Tu-Flo550	23511334
5000190	BX107622B1
5000192	85102168
107042	700013205
107095	23505234
107622	
107785	
109867	
65216	
65672	
800018	

Cylinder Bore	Ø70,64
Stroke	38
Swept Volume	298
Air Inlet Port Size	-
Air Delivery Port Size	1/2"-14 NPTF
Number of Cylinders	2
Through Drive	Yes
Unloader Port Size	1/8"- 27 NPTF
Water Or Air Cooled	W
Water Inlet Port Size	1/2"-14 NPTF
Water Delivery Port Size	1/2"-14 NPTF
Water Cooled Valve Plate	Yes

Components

762.01.1100 Crankcase

	OEM	OE

712.01.1200 Cylinder Head

	OEM	OE
	107082	9P920283

712.01.1400 Connecting Rod

	OEM	OE
	108841	

712.01.1410 Big end Bearing

	OEM	OE
	107651	

712.01.1470 Connecting Rod & Piston Rep

	OEM	OE
	108843	

712.01.1500 Crankshaft

	OEM	OE

636.01.1580 Nut For Crankshaft

	OEM	OE

736.01.1600 Bearing Cover

	OEM	OE

712.01.1700 Piston With Rings (STD)

	OEM	OE
712.01.1700-Ø70.64 mm 712.01.1710-Ø70.89 mm 712.01.1720-Ø71.14 mm 712.01.1730-Ø71.39 mm 712.01.1740-Ø71.64 mm		

712.01.1701 Piston (STD)

	OEM	OE
	107647	
712.01.1701-Ø70.64 mm 712.01.1711-Ø70.89 mm 712.01.1721-Ø71.14 mm 712.01.1731-Ø71.39 mm 712.01.1741-Ø71.64 mm		

712.01.1800 Piston Ring Kit (STD)

	OEM	OE
	5005361 107639	
712.01.1800-Ø70.64 mm 712.01.1810-Ø70.89 mm 712.01.1820-Ø71.14 mm 712.01.1830-Ø71.39 mm 712.01.1840-Ø71.64 mm		

672.01.2600 Bushing

	OEM	OE
		AK2500350R

636.01.2900 Gear		OEM	OE
			8929721 8929721

712.01.2350 Repair Kit w/o Bushing		OEM	OE
		107516	107516 2K200296

712.01.2320 Repair Kit		OEM	OE

712.01.2100 Gasket & Sealing Kit		OEM	OE

712.01.2200 Valve Kit		OEM	OE

		OEM	OE

		OEM	OE

		OEM	OE

		OEM	OE

		OEM	OE

		OEM	OE

		OEM	OE

		OEM	OE

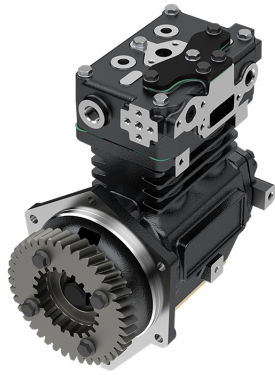
		OEM	OE

		OEM	OE

		OEM	OE

		OEM	OE

		OEM	OE

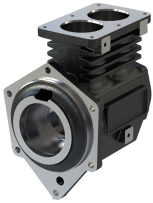
766.01.1000
Compressor (Twin Cylinder)
Application: DETROIT DIESEL ENGINES DDC 60 SERIES

766.01.1000

**766.01.2000
(WITHOUT GEAR)**

OEM	OE
Tu-Flo550 5013830	23534455

Cylinder Bore	Ø70,64
Stroke	38
Swept Volume	298
Air Inlet Port Size	-
Air Delivery Port Size	1/2'-14 NPTF
Number of Cylinders	2
Through Drive	Yes
Unloader Port Size	1/8'- 27 NPTF
Water Or Air Cooled	W
Water Inlet Port Size	1/2'-14 NPTF
Water Delivery Port Size	1/2'-14 NPTF
Water Cooled Valve Plate	Yes

Components

697.01.1100 Crankcase


OEM	OE

712.01.1200 Cylinder Head


OEM	OE
107082	9P920283

712.01.1400 Connecting Rod


OEM	OE
108841	

712.01.1410 Big end Bearing


OEM	OE
107651	

712.01.1470 Connecting Rod & Piston Rep

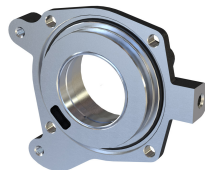

OEM	OE
108843	

712.01.1500 Crankshaft


OEM	OE

670.01.1502 Screw for Crankshaft


OEM	OE

697.01.1600 Bearing Cover


OEM	OE

712.01.1700 Piston With Rings (STD)


OEM	OE

712.01.1700-Ø70.64 mm
712.01.1710-Ø70.89 mm
712.01.1720-Ø71.14 mm
712.01.1730-Ø71.39 mm
712.01.1740-Ø71.64 mm

712.01.1800 Piston Ring Kit (STD)


OEM	OE
5005361 107639	

712.01.1800-Ø70.64 mm
712.01.1810-Ø70.89 mm
712.01.1820-Ø71.14 mm
712.01.1830-Ø71.39 mm
712.01.1840-Ø71.64 mm

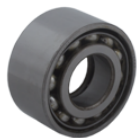
697.01.2900 Gear


OEM	OE
	8929311

672.01.2910 Flange For Gear


OEM	OE

672.01.1103 Bearing

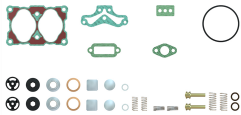


OEM

OE

40BVV09-1

712.01.2350 Repair Kit w/o Bushing



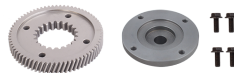
OEM

OE

107516

107516
2K200296

697.01.2950 GearSet



OEM

OE

OEM

OE

OEM

OE

OEM

OE

OEM

OE

OEM

OE

OEM

OE

OEM

OE

OEM

OE

OEM

OE

OEM

OE

OEM

OE

OEM

OE

OEM

OE

OEM

OE

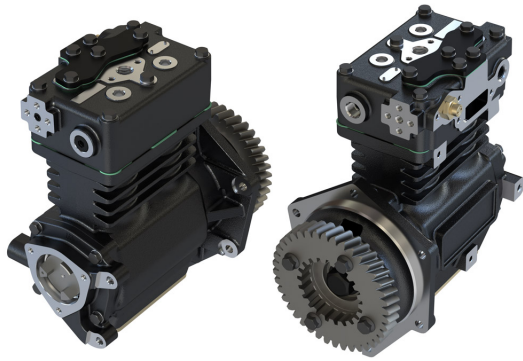
OEM

OE

798.01.1000

Compressor (Twin Cylinder)

Application: DETROIT DIESEL ENGINES DDC 60 SERIES



OEM	OE
Tu-Flo750 5013831 K053744	23534461

Air Delivery Port Size	1/2"-14 NPTF
Number of Cylinders	2
Through Drive	Yes
Unloader Port Size	1/8"- 27 NPTF
Water Or Air Cooled	W
Water Inlet Port Size	1/2"-14 NPTF
Water Delivery Port Size	1/2"-14 NPTF
Water Cooled Valve Plate	Yes
Cylinder Bore	Ø70,64
Stroke	48
Swept Volume	376
Air Inlet Port Size	-

Components

697.01.1100 Crankcase

OEM	OE

712.01.1200 Cylinder Head

OEM	OE
107082	9P920283

712.01.1400 Connecting Rod

OEM	OE
108841	

712.01.1410 Big end Bearing

OEM	OE
107651	

697.01.1470 Connecting Rod & Piston Rep

OEM	OE

697.01.1500 Crankshaft

OEM	OE

670.01.1502 Screw for Crankshaft

OEM	OE

697.01.1600 Bearing Cover

OEM	OE

697.01.1700 Piston With Rings (STD)

OEM	OE
 697.01.1700-Ø70.64 mm 697.01.1710-Ø70.89 mm 697.01.1720-Ø71.14 mm 697.01.1730-Ø71.39 mm 697.01.1740-Ø71.64 mm	

697.01.1701 Piston Ring Kit (STD)

OEM	OE
 697.01.1701-Ø70.64 mm 697.01.1711-Ø70.89 mm 697.01.1721-Ø71.14 mm 697.01.1731-Ø71.39 mm 697.01.1741-Ø71.64 mm	

712.01.1800 Piston Ring Kit (STD)

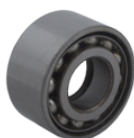
OEM	OE
 712.01.1800-Ø70.64 mm 712.01.1810-Ø70.89 mm 712.01.1820-Ø71.14 mm 712.01.1830-Ø71.39 mm 712.01.1840-Ø71.64 mm	5005361 107639

697.01.2900 Gear

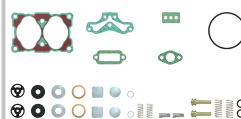
OEM	OE
	8929311

672.01.2910 Flange For Gear


OEM	OE

672.01.1103 Bearing


OEM	OE
	40BVV09-1

712.01.2350 Repair Kit w/o Bushing


OEM	OE
107516	107516 2K200296

697.01.2950 GearSet


OEM	OE

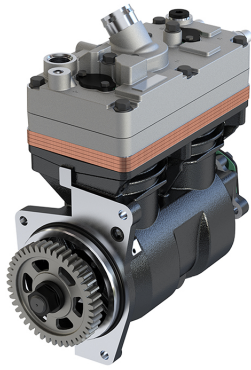
OEM	OE

OEM	OE

810.01.1000

Compressor (Twin Cylinder)

Application: 650 cc



810.01.1000



**810.01.2000
(WITHOUT GEAR)**

OEM	OE
LK4973	4701300815
K066332N00	4701301315
K066332N01	4701301715
K057764N00	4701301815
K057764N01	4701304515
K168097N00	0011307515
K168097N01	0021307015
K260837N01	0021306315
K214163N01	0011308115
	4701300815
	4701301315
	4701301715
	4701301815
	4701304515
	0011307515
	0021307015
	0021306315
	0011308115

Cylinder Bore	Ø86
Stroke	56
Swept Volume	650
Air Inlet Port Size	Ø34.5
Air Delivery Port Size	M26x1.5
Number of Cylinders	2
Through Drive	Yes
Unloader Port Size	M10x1
Water Or Air Cooled	W
Water Inlet Port Size	M18x1.5
Water Delivery Port Size	M18x1.5
Water Cooled Valve Plate	Yes

Components

486.01.1100 Crankcase

	OEM	OE

486.01.1200 Cylinder Head

	OEM	OE

486.01.1220 Cylinder Upper Head

	OEM	OE

440.01.1230 Cylinder Lower Head

	OEM	OE

486.01.1250 Cylinder Head Kit

	OEM	OE
	K091889K50 K091890K50	0021304715 0021304815

486.01.1210 Cylinder Head With Plate Kit

	OEM	OE
	K091889K50 K091890K50	

440.01.1300 Plate Kit

	OEM	OE

440.01.1310 Plate Kit, Complete

	OEM	OE

440.01.1320 Plate Kit

	OEM	OE
	K091891K50	

440.01.1400 Connecting Rod

	OEM	OE

408.01.1700 Piston With Rings (STD)

	OEM	OE
	SEB22547	42549147 42562096 42534241 42536601
	408.01.1700-Ø86.00 mm	
	408.01.1710-Ø86.25 mm	
	408.01.1720-Ø86.50 mm	
	408.01.1730-Ø86.75 mm	
	408.01.1740-Ø87.00 mm	

408.01.1800 Piston Ring Kit (STD)

	OEM	OE
	408.01.1800-Ø86.00 mm	
	408.01.1810-Ø86.25 mm	
	408.01.1820-Ø86.50 mm	
	408.01.1830-Ø86.75 mm	
	408.01.1840-Ø87.00 mm	

440.01.2300 Repair Kit With Bushing

OEM	OE

440.01.2350 Repair Kit w/o Bushing

OEM	OE

440.01.2330 Repair Kit

OEM	OE

440.01.2320 Repair Kit

OEM	OE
K091883K50	0021304615

440.01.1280 Head Repair Kit

OEM	OE

440.01.2100 Gasket & Sealing Kit

OEM	OE

440.01.2200 Valve Kit

OEM	OE

175.01.2500 Unloader Valve Kit

OEM	OE
K034874K50 K159064K50 K049446	1919356 0021304915

172.01.1900 Cap

OEM	OE

543.01.2900 Gear

OEM	OE
	4701320105

102.01.2600 Bushing

OEM	OE
EB00819	1315274 1697278 1697286 5001830853 1697286

110.01.2700 Screw Kit

OEM	OE

487.01.1500 Crankshaft

OEM	OE

487.01.1600 Bearing Cover

OEM	OE

OEM	OE

OEM	OE

OEM	OE

OEM	OE



OEM	OE
Tu-Flo550	1516307C91
107007	23514502
107099	
107513	
65204	

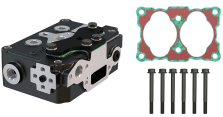
Cylinder Bore	Ø70,61
Stroke	19
Swept Volume	297.6
Air Inlet Port Size	-
Air Delivery Port Size	-
Number of Cylinders	2
Through Drive	Yes
Unloader Port Size	1/8'-27 NPT
Water Or Air Cooled	W
Water Inlet Port Size	1/2'-14 NPT
Water Delivery Port Size	1/2'-14 NPT
Water Cooled Valve Plate	Yes

Components


823.01.1100 Crankcase

	OEM	OE
		

712.01.1200 Cylinder Head

	OEM	OE
	107082	9P920283


712.01.1400 Connecting Rod

	OEM	OE
	108841	

712.01.1410 Big end Bearing

	OEM	OE
	107651	

712.01.1470 Connecting Rod & Piston Rep

	OEM	OE
	108843	

712.01.1500 Crankshaft

	OEM	OE
		


636.01.1580 Nut For Crankshaft

	OEM	OE
		

735.01.1600 Bearing Cover

	OEM	OE
		


712.01.1700 Piston With Rings (STD)

	OEM	OE
		
712.01.1700-Ø70.64 mm 712.01.1710-Ø70.89 mm 712.01.1720-Ø71.14 mm 712.01.1730-Ø71.39 mm 712.01.1740-Ø71.64 mm		


712.01.1701 Piston (STD)

	OEM	OE
	107647	
712.01.1701-Ø70.64 mm 712.01.1711-Ø70.89 mm 712.01.1721-Ø71.14 mm 712.01.1731-Ø71.39 mm 712.01.1741-Ø71.64 mm		

712.01.1800 Piston Ring Kit (STD)

	OEM	OE
	5005361 107639	
712.01.1800-Ø70.64 mm 712.01.1810-Ø70.89 mm 712.01.1820-Ø71.14 mm 712.01.1830-Ø71.39 mm 712.01.1840-Ø71.64 mm		

672.01.2600 Bushing

	OEM	OE
		AK2500350R

636.01.2900 Gear		OEM	OE
			8929721 8929721

712.01.2350 Repair Kit w/o Bushing		OEM	OE
		107516	107516 2K200296

712.01.2320 Repair Kit		OEM	OE

712.01.2100 Gasket & Sealing Kit		OEM	OE

712.01.2200 Valve Kit		OEM	OE

		OEM	OE

		OEM	OE

		OEM	OE

		OEM	OE

		OEM	OE

		OEM	OE

		OEM	OE

		OEM	OE

		OEM	OE

		OEM	OE

		OEM	OE

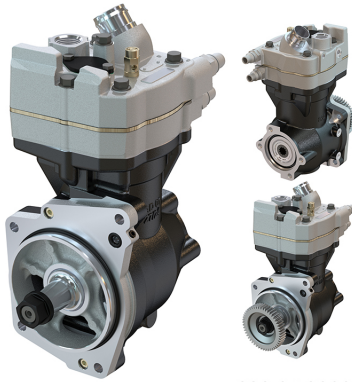
		OEM	OE

		OEM	OE

832.01.1000

Compressor (Single Cylinder)

Application: 360 cc



832.01.1000

832.01.2000
(WITH GEAR)

OEM	OE
BA-3600	0021307415
K207840	0021307315
K207847	0021306815
K207848SC	0011306615
K203786	0021302115
K210657SC	4711305815
K226470	
K210650	
K226475	
K210656	

Cylinder Bore	Ø92
Stroke	54
Swept Volume	360
Air Inlet Port Size	Ø34.5
Air Delivery Port Size	M26x1.5
Number of Cylinders	1
Through Drive	Yes
Unloader Port Size	M10x1
Water Or Air Cooled	W
Water Inlet Port Size	M18x1.5
Water Delivery Port Size	M18x1.5
Water Cooled Valve Plate	Yes

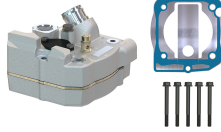
Components

832.01.1100 Crankcase



OEM	OE

832.01.1200 Cylinder Head



OEM	OE

832.01.1220 Cylinder Upper Head



OEM	OE

832.01.1230 Cylinder Lower Head



OEM	OE

832.01.1300 Coolant Plate



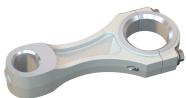
OEM	OE

728.06.100 Safety Valve



OEM	OE
	K035675
	K105705

803.01.1400 Connecting Rod



OEM	OE

832.01.1500 Crankshaft



OEM	OE

832.01.1510 Pump Adapter



OEM	OE

293.01.1580 Nut For Crankshaft



OEM	OE
8103410034	0029906650

832.01.1650 Front Flange




OEM	OE

122.01.1700 Piston With Rings (STD)



122.01.1700-Ø92.00 mm
122.01.1710-Ø92.25 mm
122.01.1720-Ø92.50 mm
122.01.1730-Ø92.75 mm
122.01.1740-Ø93.00 mm

OEM	OE
SEB22530	21136690
K006026	7421136690
K012079	51541196008
	51541196009


122.01.1800 Piston Ring Kit (STD)		
	OEM	OE
 <p>122.01.1800-Ø92.00 mm 122.01.1810-Ø92.25 mm 122.01.1820-Ø92.50 mm 122.01.1830-Ø92.75 mm 122.01.1840-Ø93.00 mm</p>		

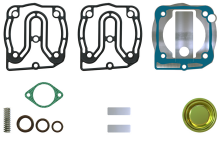
172.01.1900 Cap		
	OEM	OE
		


832.01.2600 Bushing		
	OEM	OE
		

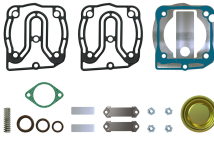
138.01.2700 Screw Kit		
	OEM	OE
		


441.01.2900 Gear		
	OEM	OE
		4721320305


832.01.2300 Repair Kit With Bushing		
	OEM	OE
		


832.01.2350 Repair Kit w/o Bushing		
	OEM	OE
		


832.01.2310 Repair Kit		
	OEM	OE
		

832.01.2330 Repair Kit		
	OEM	OE
		

832.01.1280 Head Repair Kit		
	OEM	OE
		

832.01.2100 Gasket & Sealing Kit		
	OEM	OE
		

832.01.2200 Valve Kit		
	OEM	OE
		

832.01.2500 Unloader Valve Kit		
	OEM	OE
	K203786	

	OEM	OE

	OEM	OE

	OEM	OE

	OEM	OE

	OEM	OE